



PARTNERING TOGETHER FOR *A world that knows Jesus*



And I am sure of this, that he who began a good work in you will bring it to completion at the day of Jesus Christ.

PHILIPPIANS 1:6

Thank you for considering a partnership with CMS and our missionaries. Your partnership in prayer, pastoral, relational and financial support, forms an integral part of their ministry, both on location and while on home assignment in Australia.

As you grow the 'mission health' of your church, consider the following:

1. How can we help our people catch a vision for the potential impact of a simple friendship, whether with people next door or on the other side of the globe? What can we do to help our people overcome fear or apathy, encouraging them to take the first step toward friendships that can eventually lead to gospel transformation?
2. What are one or two ways that we could assist children's ministry workers, teen mentors, and adult small-group leaders to help their groups look beyond their local and immediate concerns to taking the gospel to 'all nations' and partnering in that work?
3. How can we better communicate our missions' goals in narratives that help our people understand that our church has a God-designed part in the Great Commission that He is resourcing us to fulfill? How can we lead our people to celebrate what God is doing through us as a body?
4. How could we do better at nurturing congregation / missionary friendships that will naturally reveal ways to increase our practical support as well? In what specific ways could we expand how we come alongside our global workers?

This booklet contains information to help you engage with missionaries and God's global plan for mission.

Connecting with CMS and supporting a link missionary can help in all these areas. Our vision is for local churches to partner in global mission through fervent prayer, active engagement, generous support, and readiness to set apart cross-cultural gospel workers. *Will you join us?*



Mark Fairhurst
Executive Director
CMS QNSW

CONTENTS

3 Who is CMS?

- > Vision & values
 - > Missionaries & locations map
-

6 Why global mission?

9 Partner with us

- > The role of the link missionary, CMS and your church
 - > Next steps
-

13 Getting Ready

- > Planning for a missionary visit (deputation/home assignment)

WHO IS CMS?

Quotes from some of our link church* leaders

“CMS are Christ focused, Bible based,
and about long-term mission.”

—
Tory C

Senior Minister, Kootingal Anglican

“The aim of CMS is ‘*a world that knows Jesus*’. This means it is evangelistic in character as well as building up the church in places where it is established. The emphasis on long-term ministry, the importance of language learning and understanding culture is very commendable, as well as the preparation provided by time at St Andrew’s Hall [in Melbourne] before leaving Australia. This means that the missionaries are prepared for the hard times as well as the good.”

—
Barbara W

Missions Contact, Inverell Anglican

“I like that they are on about Jesus, about discipling people deep in the faith not just seeing bums on seats.”

—
Mike W

Pastor, City on a Hill Brisbane

*A link church is a church that has signed up to support a CMS missionary through prayer, care and regular financial giving.

OUR VISION

A world that knows Jesus

OUR PURPOSE

We work with churches to set apart godly people as long-term cross-cultural gospel workers.

OUR MISSION

- **Reach gospel-poor peoples for Christ**
- **Equip Christians as leaders in the church and the world**
- **Engage churches in cross-cultural mission**

REACH GOSPEL-POOR PEOPLES FOR CHRIST

Where witness to Christ is limited, we proclaim the gospel and disciple believers, serving in a range of roles, partnering with the local church.

EQUIP CHRISTIANS AS LEADERS IN THE CHURCH AND THE WORLD

We partner with churches and Christian organisations to train and mentor godly leaders who will serve Christ with their whole lives and equip others.

ENGAGE CHURCHES IN CROSS-CULTURAL MISSION

We share our experience and expertise so that churches in Australia and around the world will engage in and support cross-cultural mission.

OUR VALUES



GOSPEL PRIORITY

Grounded in God's word, the Bible, we strive to be faithful gospel witnesses in all that we do, so that people might repent and believe in the Lord Jesus Christ for eternal salvation and grow as his disciples.



CROSS-SHAPED

The cross is both the message we proclaim and the life we live. Therefore, we serve in the power of the Holy Spirit, humbly laying down our lives in weakness, vulnerability and dependent prayer, for the sake of others and God's glory.



LONG-TERM

We go long-term because we are committed to developing cultural understanding, learning language, and investing in long-term relationships for the sake of effective cross-cultural mission. We value Bible-based theological education, excellent pastoral care, specialised training for mission, and lifelong learning.

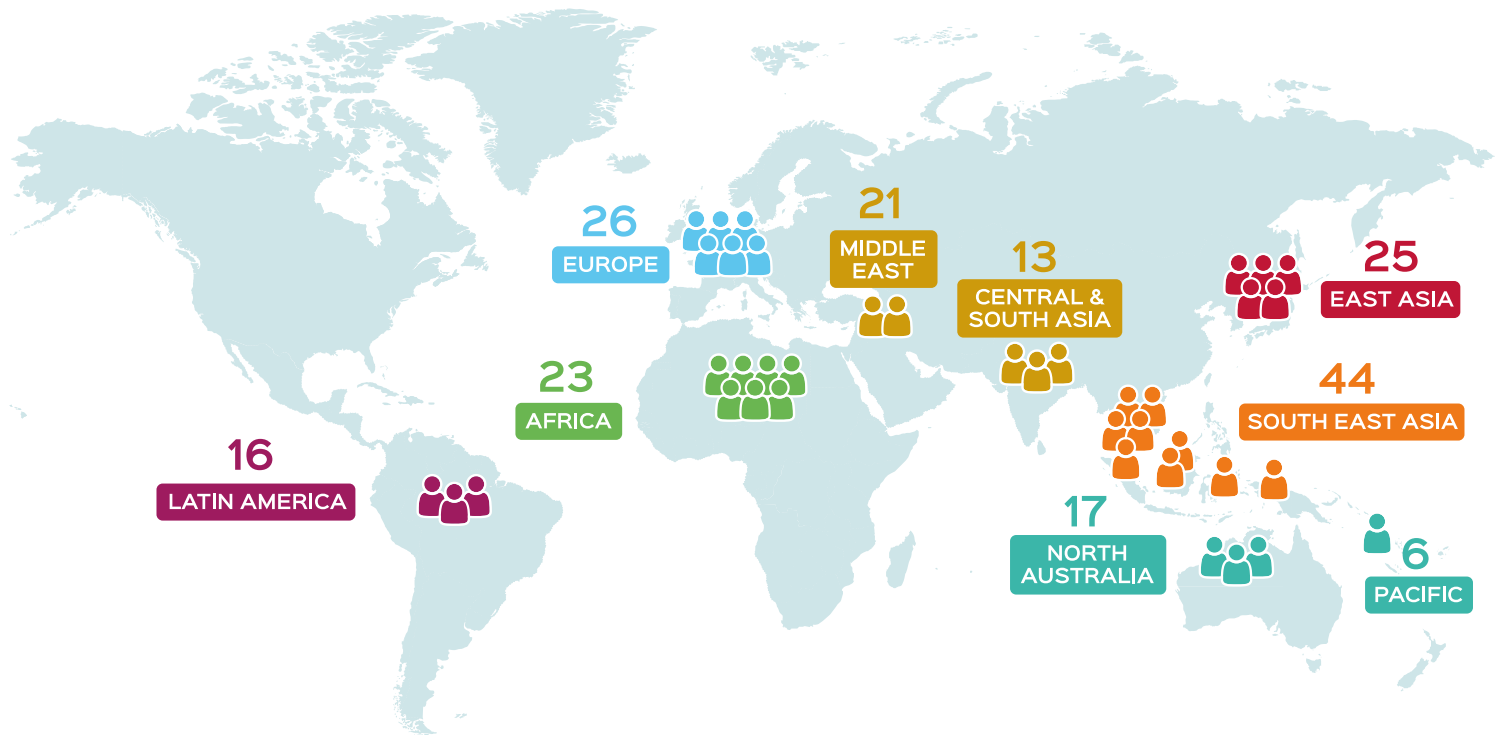


IN PARTNERSHIP

We partner with churches in Australia to set apart and support missionaries. Around the world, we partner with and serve under the authority of local leaders and at their invitation, wherever possible.

OUR MISSIONARIES AND LOCATIONS

CMS has branches all across Australia. As a fellowship we have 191 missionaries serving across 43 countries or people groups.



Total number of workers at the beginning of 2023:

191

WHY GLOBAL MISSION?

“We support global mission because that is God’s heart for the world, God’s plan for the world through Jesus, and God’s mission (amongst others) for his people.”

Bernard G

Senior Minister, Narrabri Anglican

“We want to be caring about the nations because Jesus does. He commands us to go and make disciples of all nations (Matthew 28).”

Mike W

Pastor, City on a Hill Brisbane

“We support global mission because it’s part of our discipleship. And I think one of the most helpful things you can do to get enthused about global mission is to be at Summer School each year with your whole family. ”

Tory C

Senior Minister, Kootingal Anglican



Why global mission?

Australia is increasingly culturally diverse and so mission is no longer 'from West to the rest' but 'from everywhere, to everywhere'.

While acknowledging the changing demographic of Australian society and its influence on mission, CMS maintains a distinction between global cross-cultural mission and local cross-cultural mission. It also recognises that both are an important and appropriate response to the biblical imperative to make disciples of all nations.

Global mission helps local mission

CMS and CMS missionaries can play a role in working with churches to encourage their cross-cultural ministry engagement to extend beyond the reach of the local church. Research shows that engagement in global missions often leads to a greater awareness of and vision for local mission¹.

- Global mission reminds the local church that the church is bigger than the local church
- Global mission reminds us that we are weak and powerless without God
- Global mission stimulates prayer, growth in faith and maturity
- Global mission models sacrifice.

| CMS missionaries are the 'human face' to global missions.



CMS missionaries Adam and Helene Ramsay, serving in Japan, present at Summer School.

¹ Tim Silberman, doctoral thesis on 'To Neighbours and Nations: Factors Shaping Australian Evangelical Church Patterns of Mission Involvement'.

Prayer for global mission



The body

Lord God, thank you for your church and your goodness to us. Thank you that you know us, and we can trust you in all areas of our lives and in the lives of others. We pray for communities where Bible teaching is still continuously forming. Lord, we ask you would continue to raise up leaders in these communities and people groups, that they would be true to your word.



Head

Help us to think globally Lord, beyond our own communities. May we be faithful in prayer for people all over the world who haven't had an opportunity to hear about Jesus.



Heart

Help us to foster a heart for global mission in our churches, our prayer groups and our lives. Give us compassion for others and help us to care for what breaks your heart God.



Hands

Help us all to recognise and use our gifts and skills to serve others. Help us to be generous with our finances and our time, as we pray for and support your mission and long for *a world that knows Jesus*.



Feet

We pray that people from our church will want to *Go!* to become missionaries and to take the word of God out to all the nations.

PARTNER WITH US

“We love the care CMS shows in choosing, equipping, sending and supporting missionaries—as well as the clear and consistent communication in partnership.”

Bernard G

Senior Minister, Narrabri Anglican

“We have always been blessed as a church by the growing relationship with our link missionaries.”

David H

Senior Minister,
Northern Beaches Anglican

“CMS are well run and have clear communication with stakeholders.”

Mike W

Pastor, City on a Hill Brisbane

“Our link missionaries, Andrew and Margie Newman, spent time in our parish before leaving for Uganda, including with the Bible study groups as well as speaking to the whole congregation. They send out a regular monthly newsletter which often accompanies a video so that we can see them in their workplace. This has created a real bond between them and us.”

Barbara W

Missions Contact, Inverell Anglican

“It is a privilege to be involved in the Great Commission by supporting a missionary. It is really helpful for my discipleship. I chose CMS because I share the same convictions as CMS.”

Tory C

Senior Minister, Kootingal Anglican

The roles of the link missionary, CMS QNNSW and your church

The application to become a CMS missionary is extensive and can often take a year or more to complete. Once approved, missionary trainees, or MiTs (Missionaries-in-Training) attend the CMS training college, St Andrew's Hall, in Melbourne for a 19-week residential program focusing on missiology, cultural studies and personal preparation to serve the Lord Jesus. It is during this time that we consider with them, which churches might want to support them financially and prayerfully. This process is overseen by CMS staff, working with the missionaries, and your church's senior minister.

Thank you for considering this partnership. Here is an outline of each of the roles for an effective partnership.

The role of the link missionaries:

- After graduation from St Andrew's Hall, missionaries have an **initial home assignment** of approximately six months, where they visit all their link churches. This is a critical time to connect with as many people as possible and to build relationships with supporters.
- They will be in contact to organise a time to meet you and your staff, to plan for their first visit.
- They will keep in regular touch by providing news and prayer points.
- They will provide you with prayer cards containing information about them, their location and ministry, and how you can partner with them.
- Every two to three years they return to Australia for **home assignment** where they will spend a week with your church to report on their ministry, build relationships with the congregation and invite people to continue praying as they return to location.

The role of CMS:

CMS actively helps missionaries in their training and growing prayer, care and financial support. We are committed to doing this as a fellowship. All CMS missionaries and staff work together to raise the funds needed to send out all the missionaries and we trust God to provide.

CMS supports your church and members in their commitment to global mission and your link missionaries by:

- Overseeing the missionaries' home assignment and relationship with link churches.
- Digital and other resources for use on your church website and social media or PowerPoints for your church services to encourage prayer and mission education.
- Regular events, including its annual Mission Encounter in Tamworth and Summer School in Tamborine Mountain: a five-day residential or day visitor event with Bible teaching alongside missionary input, with an amazing children and youth program. Some churches make this part of their church camp/retreat.
- Assistance to help churches consider their part in God's plan in reaching the nations through consultation with Ministers / Mission Teams or preaching by the CMS Executive Director.

The role of the Church:

1. Using Home Assignment time well

- Plan missionaries' first and subsequent home assignments well by providing them with opportunities to get to know people in small groups, as well as talking to whole congregations.
- Prepare the congregation before their arrival and introduce them to the whole church.
- During the services, allow the missionary enough time to inform the church of their ministry.
- Allow the missionary opportunity to share in a way that compliments their strengths and skills. Some missionaries may be gifted in preaching, some in children's ministry, some in music ministry etc.
- Help the missionaries with any practical needs during their home assignment time at your church by offering accommodation or lending a vehicle for example.

2. Frequent prayer

- Use the missionary's prayer points during your services or include them on your church newsletter.
- Encourage small groups to 'adopt' the link missionary.
- Encourage individual members of your church to receive your missionaries' prayer notes by email, either by visiting cms.org.au or scanning the QR code on the missionary's prayer card.

3. Regular communication

- Encourage church leadership to treat your link missionaries as **part of the ministry team**. This also helps the missionary stay accountable.
- Help establish a primary contact person who is responsible to ensure this contact happens, preferably quarterly and review to ensure that the relationship does not go stale, as long-distance relationships are not easy!
- Be creative in your contact with your link missionary but also consider their safety and security (see CMS Secure Communication Guide).
- If your missionary is not in a secure location, advertise your partnership with them and CMS on your church website and in your church newsletters.

4. Preaching on the biblical imperative for global mission and encouraging people to consider missionary service

- Keep including sermons about the importance of global and cross-cultural mission and ministry.
- The CMS Executive Director can be booked to preach at your church and speak with your Missions Team.
- CMS is not precious about only encouraging people to go with CMS. There are many mission agencies out there. However, anyone interested in starting a conversation is welcome to contact the CMS office.

5. Committed financial support

- CMS depends entirely on donations from link churches and supporters.
- We recognise that different churches will provide various levels of financial support. However, we do ask each partner church to make a realistic commitment to the financial needs of their missionaries.
- On average, annual living and ministry support costs for a single missionary is \$65,000 per annum. For a family, it is around \$130,000. About one third of this comes through donations by the missionaries' six or seven link churches. The rest is provided through individuals giving directly to CMS.
- These funds should be forwarded to CMS (at least) quarterly.
- CMS will begin the financial support of missionaries when they commence at St Andrew's Hall. It is important for churches to begin sending their financial support as soon as possible after this.
- As living costs increase each year, would you consider increasing your donation each year?

Next steps:

- Are your elders or church council supportive and ready for this long-term commitment?
- Would you like to discuss any of this with our Executive Director or Partnership staff?
- To formalise a link church-link missionary relationship, please contact CMS staff and they will send you a **Partner Church Agreement**.
- CMS missionaries are linked with six to seven churches. We have found this number allows for good relationships with each church.
- The partnership form needs to be filled out *before* the missionary will visit your church for their home assignment. The partnership staff will advise you of this deadline for decision.



CMS missionaries Andrew and Margie Newman, serving in Uganda, run a children's talk at Summer School.

GETTING READY

“As well as our CMS link missionaries, we also support Compassion, Open Doors, Bible Society and some other missions. Each ministry we support has a representative who is responsible for keeping the local church informed. There is a mission committee which meets about every two months to discuss ways of doing mission more effectively. We also have regular stalls selling jams, plants, books, craft etc. with all proceeds going to the work of mission.”

Barbara W

Missions Contact, Inverell Anglican

“This year we had a desire to begin a journey adopting an unreached people group, we chose the second largest group, the Japanese. We are still figuring out what this looks like but we pray at least monthly. We have started meeting together to pray and plan about how we can be on mission to the Japanese both locally and abroad.”

Mike W

Pastor, City on a Hill Brisbane

“We are in the process of forming a Global Missions Team to encourage our church to be active missionary partners and to raise up a global mission worker from our church. We pray, give, and encourage our mission partners.”

Tory C

Senior Minister, Kootingal Anglican

Planning for a missionary deputation / home assignment

Planning timeline and suggested events

Prior to the missionary arriving in Australia, CMS partnership staff will be in contact to find a suitable week in your church calendar for the missionary to spend time with you. If your church is the primary sending church or a large church with many small groups, two weeks will be allocated.

They will also check if the church are able to assist with accommodation for the missionary's home base and/or appropriate transport. If your church is some distance from the missionary's home base, can you provide accommodation for the period they are visiting with you?

Missionary arrival

When your missionary arrives back, CMS will confirm the dates and you will be sent their contact details. Ideally, as soon as possible, you should arrange for the missionaries to meet with your church staff and mission coordinator. This meeting is an important opportunity to:

1. Hear about your missionaries' latest term of service.
2. Let them know about your church. How have you been seeking to grow your mission focus? Has there been significant change in the church or important issues they need to know about?
3. Plan their time with you:
 - How do you want to use them in your Sunday services or main meetings?
 - Which groups do you/they want them to attend (children's/youth groups, home groups)?
 - Are there any committed supporters or potential missionaries that they should meet?
 - Are there any special events you are planning?
 - Who should they contact to work out the details of their week with you?
 - Do you need resources to help with promotion?

One month before the home assignment visit/deputation

Contact or meet with your missionary to finalise the details of their visit.

Sunday Services:

- Preaching passages, length of sermon, other presentations (e.g. 5 minute spot).
- Any audio/visual needs (DVD or PPT to be used). Will they need to provide a script to the AV operator on the day? etc.
- Questions for an interview if needed (ask them what they would like to talk about in this).
- Who will be at which service (the whole family may find it difficult to be there for the whole day)?
- Who at the church will have the task of making the missionaries' children feel welcome on the Sunday?
- Where will your missionaries have lunch on Sunday and with whom?

During the week

- Which groups/events are the missionaries going to visit? What type of presentation (long or short presentation, open discussion, AV presentation, kids' presentation, etc.)? Date, time, address and contact person for event.
- Can mid-week meals be organised with people (at the missionaries' place or hosted by a parishioner)? These are perhaps the most effective events to build partnership.
- Can the whole missionary family be at an event? Will child minding be provided if both parents attend certain events?
- If your church is a long way from the missionaries' home base, has accommodation been finalised? For how long (one night or whole week)? How many people are staying (whole family or just one person)?
- Remember to plan for some free time in your missionaries' program. Can you have some people go to their place for an evening rather than them going out every night?
- Ask your mission coordinator to start intensifying the promotion of your missionaries' visit.

Two weeks before the home assignment/deputation visit

- Contact your missionaries to confirm everyone is clear about their deputation week.
- Send the missionary the full schedule of the events/groups they will be attending.
- Make sure the missionary sends you the required talk outlines, Bible readings, prayer points, AV scripts etc.



A commissioning service for CMS missionary Elle Bryce, serving in Japan.



CONNECT WITH CMS AND OUR MISSIONARIES

Attend one of our events:

 cms.org.au/qnsw/upcoming-events

Sign up for missionary newsletters:

 cms.org.au/missionaries

Follow us on social media:

 facebook.com/cms.qnsw

 [@cms_qnsw](https://instagram.com/cms_qnsw)

cms.org.au/qnsw

qnsw@cms.org.au | (07) 3171 3020
Level 1 80 Petrie Terrace, Petrie Terrace QLD 4000