



Partners in
**CROSS-
CULTURAL
MISSION**

checkpoint.
SPECIAL EDITION



checkpoint.

© 2023 Church Missionary Society – Australia Ltd. Permission to reproduce material may be obtained from the editor. CMS is a member of Missions Interlink. For information and feedback, please email: checkpoint@cms.org.au. Please send CHANGES OF ADDRESS to your CMS branch office (see back cover). Unless otherwise stated, all Bible quotations are from the New International Version® Copyright© 1973, 1978, 1984, 2011 by Biblica, Inc.™ CMS Australia contracts an independent professional to receive complaints – 1800 070 511 helpline@safercommunities.net.au

International Director: Peter Sholl; Communications Manager: David Carpenter;
Editorial Coordinator: Naomi Jones; Editor: Gordon Cheng;
Design: Clarisse Avila and Meghan Sitton.

Images: (Front) Church in the Philippines; (This page) Theological students in Chile.



Welcome

Hello, and welcome to this special edition of our CMS magazine *Checkpoint*.

I first 'met' CMS in 1988. I was at university, and went to a church that supported CMS missionaries involved in student ministry. Some were serving in Argentina, and others were preparing to go to France.

I gradually got to know CMS, and became more involved in CMS activities. Eventually I went to Mexico as a CMS missionary with my family. Over the years, I have been constantly struck that everyone involved in CMS longs to see *a world that knows Jesus*.

I see this deep commitment in those who are prayer supporters and givers in local churches; in those who volunteer on committees and serve at conferences; in our candidates as they go through our selection and training; and in our missionaries as they serve the Lord Jesus around the world. Our simple yet profound vision is at the heart of all that we do.

As you read the following pages, may you be enriched in your walk with the Lord. And may you be inspired to join in God's mission to the nations through CMS—so that more and more people around the world would know the Lord Jesus Christ.



Canon Peter Sholl
CMS Australia International Director
November 2023

CONTENTS

- 5** God's global mission
- 6** Our heart for the gospel
- 8** Sending people together
- 10** Serving under local leadership
- 12** A snapshot of CMS
- 14** Growing God's church
- 15** God's faithfulness in France
- 16** Going long-term
- 17** Our commitment to pastoral care
- 18** Our gospel partnership in the Northern Territory
- 19** Thinking about mission?
- 20** We value training
- 22** Partner with us



OUR VISION

A world that knows Jesus

OUR PURPOSE

We work with churches to set apart godly people as long-term cross-cultural gospel workers.

OUR MISSION

- Reach gospel-poor peoples for Christ
- Equip Christians as leaders in the church and the world
- Engage churches in cross-cultural mission

REACH GOSPEL-POOR PEOPLES FOR CHRIST

Where witness to Christ is limited, we proclaim the gospel and disciple believers, serving in a range of roles, partnering with the local church.

EQUIP CHRISTIANS AS LEADERS IN THE CHURCH AND THE WORLD

We partner with churches and Christian organisations to train and mentor godly leaders who will serve Christ with their whole lives and equip others.

ENGAGE CHURCHES IN CROSS-CULTURAL MISSION

We share our experience and expertise so that churches in Australia and around the world will engage in and support cross-cultural mission.

OUR VALUES



GOSPEL PRIORITY

Grounded in God's word, the Bible, we strive to be faithful gospel witnesses in all that we do, so that people might repent and believe in the Lord Jesus Christ for eternal salvation and grow as his disciples.



CROSS-SHAPED

The cross is both the message we proclaim and the life we live. Therefore, we serve in the power of the Holy Spirit, humbly laying down our lives in weakness, vulnerability and dependent prayer, for the sake of others and God's glory.



LONG-TERM

We go long-term because we are committed to developing cultural understanding, learning language, and investing in long-term relationships for the sake of effective cross-cultural mission. We value Bible-based theological education, excellent pastoral care, specialised training for mission, and lifelong learning.



IN PARTNERSHIP

We partner with churches in Australia to set apart and support missionaries. Around the world, we partner with and serve under the authority of local leaders and at their invitation, wherever possible.



GOD'S GLOBAL MISSION

Our vision is for *a world that knows Jesus*. Mission is all about the Lord Jesus Christ, because he is the only hope for our world.

Creation is broken, and groans in despair, because of humanity's rebellion against our holy God. Yet the Bible is clear that God has reconciled all things to himself through the death and resurrection of Jesus.

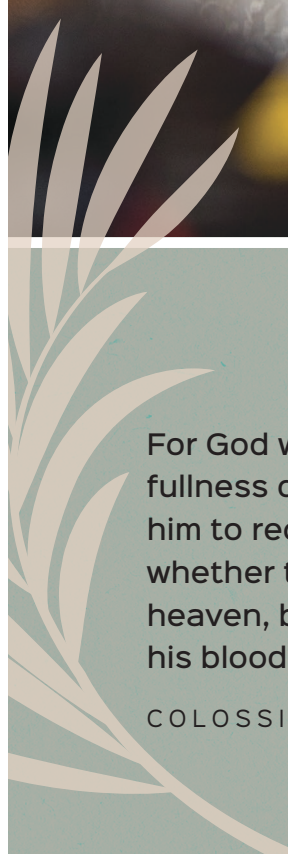
The greatest problem for every human in our world is a broken relationship with God.

Only Jesus can solve this problem.

Mission isn't just *about* Jesus. It is *his* mission.

When you partner with CMS you are joining his mission to reach a lost world. As the CMS family, we can't bring about *a world that knows Jesus*. But God can.

We invite you to join us in God's mission to men, women and children across the world.



For God was pleased to have all his fullness dwell in him, and through him to reconcile to himself all things, whether things on earth or things in heaven, by making peace through his blood, shed on the cross.

COLOSSIANS 1:19-20

Our heart FOR THE GOSPEL

Since we long for *a world that knows Jesus*, sharing the gospel is our passion.

The gospel is the message of God's deep love for a broken and undeserving world.

The Lord Jesus died as an atoning sacrifice, turning aside God's righteous wrath and condemnation (Romans 3:25). God reconciled all things in creation to himself through Jesus' blood, shed on the cross (Colossians 1:19). The resurrection of Jesus shows God's faithfulness to his promises, and his absolute power over sin, death and Satan. It gives us the sure, living hope that he will return to judge the world, and save those who trust him (1 Peter 1:3).

The heart of the gospel message is the life, death and resurrection of Jesus, set in the Bible's unfolding story of God's rescue plan.

Across the world, billions of people do not know the name of Jesus.

Together we are seeking to reach gospel-poor peoples with this wonderful news of peace.



"What is your name?"

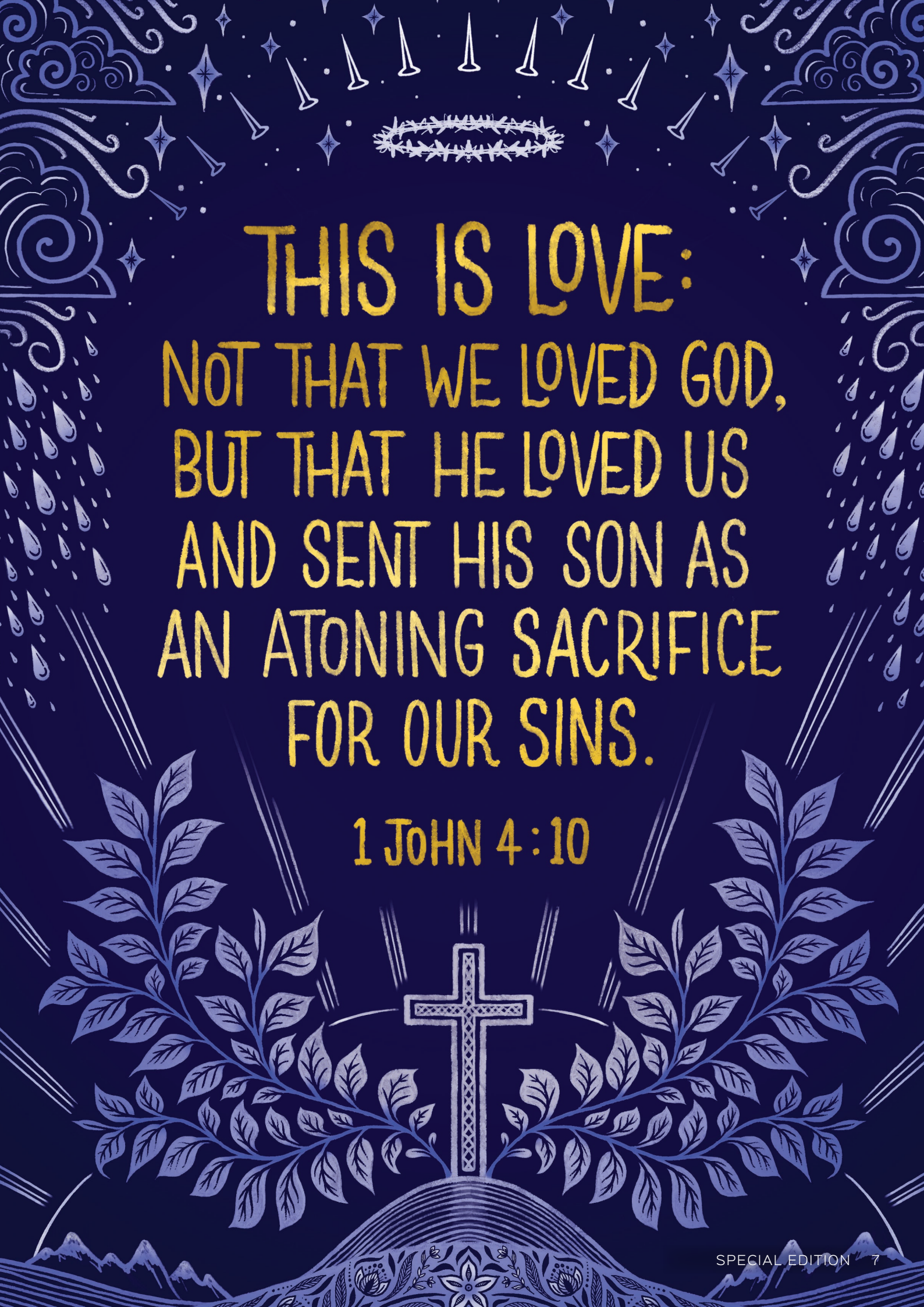
Sophea* was unable to answer the simple question. She would cover her face with her hands, stutter, and giggle nervously. For months it was the same. Whenever she was called on in class, she was struck with fear.

Sophea has been studying at Elim Bible College in Cambodia for almost two years, where CMS missionaries Maurice and Amanda Jacobson are on the teaching staff. They have seen how studying at Bible college has transformed Sophea.

Sophea shared with Amanda about her recent visit to her home village. With a new, confident laugh, Sophea says, "The children couldn't wait for me to arrive at church in the morning, so they came to my house looking for me. They say I'm their favourite teacher." Although she is still young herself, studying the Bible has given Sophea confidence to share it with others.

Amanda explains, "**We marvel at the transformation God has brought about—in her own strength she was speechless, but God has given her a voice to share his gospel!**"

**Name changed for privacy reasons.*



THIS IS LOVE:
NOT THAT WE LOVED GOD,
BUT THAT HE LOVED US
AND SENT HIS SON AS
AN ATONING SACRIFICE
FOR OUR SINS.

1 JOHN 4:10

SENDING PEOPLE *together*

Our God is a sending God. We rejoice that around the world, churches are both mission-minded and mission-sending, whether they are in Santiago or Sydney.

We send because we are obedient to Jesus. He tells us to pray that the Lord of the harvest would send out workers into his harvest field. That's why we work with churches to set apart godly people as long-term cross-cultural gospel workers.

We recognise that today, Western countries stand a long way from the centre of the world church. Therefore, we work in partnership, we send in humility, and we work under the authority of local leaders.

In all we do, whether in sending or going, we seek to be people who are cross-shaped as we humbly depend on God in persistent prayer.



"We grew up as missionary kids. When we approached CMS to discuss cross-cultural work, they wisely advised us to first explore other organisations. After investigation, we were convinced that CMS would be best to help our family thrive in long-term ministry. We are thankful for our thorough training at St Andrew's Hall. And we are so grateful for the deep and respectful relationship between CMS and our partner organisation. This trust has grown out of the annual visits to our location by CMS."

Tim and Olivia Mulherin
CMS missionaries, Cambodia



"It has recently been our privilege to send one of our church families to serve with CMS. Our church partners with CMS because of its long and distinguished track record of care for people—those it sends and those they seek to reach."

Rev Kevin Pedersen
Ormond Anglican Church, Vic



"By God's grace, he has used the partnership between AFES and CMS to raise up many to proclaim the momentous news of Jesus all around his world. As my wife and I pray through the CMS Prayer Diary, we praise God for former AFES students and staff serving as CMS missionaries in Vanuatu, Italy, France, Belgium, Japan, Argentina, and other sensitive locations. Our prayer is that through our partnership the Lord might double the number offering to serve the nations with the gospel."

Richard Chin
National Director, Australian Fellowship of Evangelical Students (AFES)



Malcolm & Ainsley Purdey, serving in Chile
with Elsie, June, Calvin and Hugo.

“

We deeply value CMS as a gospel partner. In sending the Purdey family to Chile with CMS, we are sending a much-loved part of our church family to serve God's mission elsewhere.

We treasure how CMS helps us to care, both spiritually and practically, for those we send out for the glory of Jesus' name. This commitment to global mission also helps us focus on our mission locally, which is great for our church.

”



Rev Matt Lehmann
Senior Pastor, Trinity Church,
Colonel Light Gardens, SA

SERVING *under* LOCAL LEADERSHIP

CMS missionaries serve in different roles and contexts around the world. Here, some of our workers reflect on how God enables them to use their gifts and skills to serve in humility under local leadership.



As a uni student, I spent a year on exchange in Japan. It was the beginning of God questioning me about using the gifts he'd given me in his service.

Now, a big part of my job with KGK (the Christian student organisation) is to challenge Japanese university students to do the same. I want them to be captivated by God's word. I want them to entrust God with their present and their future, and surrender themselves to him. I want them to be passionate about seeing their friends share in the sure hope of knowing Jesus.

Recently at camp, the speaker asked, "What do you value more than God?" As the students in my group shared their struggles, I was reminded that it is a privilege to be part of their lives. God continues to teach me as we serve him alongside one another.

Kellie Nicholas
CMS missionary, Japan



Could you use your gifts and skills to serve with CMS?

Social worker
 Nurse
 Bible translator
 High school teacher
 Doctor
 ESL teacher
 Physiotherapist
 Theological lecturer
 Church minister
 Children's ministry worker
 Musician
 Linguistics specialist
 Community health worker
 Youth worker
 Literacy teacher
 Student ministry worker
 School principal
 Primary school teacher
 Mentor
 Administrator
 Counsellor
 University lecturer
 Palliative care specialist
 University researcher
 Engineer
 Occupational therapist
 Women's ministry worker
 IT manager
 Church planter
 Ministry apprentice
 Evangelist
 Pastoral care worker
 Accountant
 Homeschool teacher
 Speech pathologist
 Bible teacher
 Christian resource developer
 Agricultural advisor
 Conservationist

As we begin ministry with the Anglican Diocese of Seychelles, serving in humility looks like suspending judgement and being curious, generous-minded observers.

One of the things we are wrestling with is the place of young people in the local church. If they exist at all, Sunday kids' programs cater only for primary school children. The church membership is ageing, and the number of young people is dwindling. It can be tempting to implement familiar Australian ministry structures.

However, with the support of CMS, we have the time to listen and learn. We are asking questions like:

What is the place of children in wider society in the Seychelles?

What is gained when all ages stay together for church?

What does it look like for Seychellois parents to disciple their children at home?

We are thankful to work with local people who have insight into these issues, so that we might reach kids for Jesus in an authentically Seychellois way.

Ryan and Lynne Verghese
 CMS missionaries, Seychelles

Image: Ryan and Lynne Verghese (right, with their three children), with Archbishop of the Indian Ocean, James Wong, his wife, Doreen (centre, with their granddaughter), with Jonah and Yollande (pastor in Seychelles and his wife).

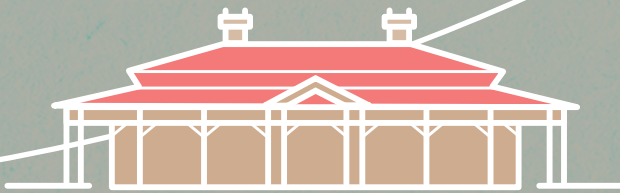
A snapshot OF CMS

235 GOSPEL WORKERS



currently serving
across the world.

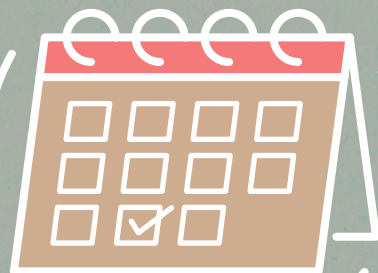
Since 2010, under
God's leading, we
have placed workers
in 12 new countries.



1,170 people
have trained for
mission service at
St Andrew's Hall
since it opened
in 1964.

The average length of service
for a CMS missionary

is currently 10.3 years.





**We partner with 81 organisations
in gospel ministry in 49 different countries.**

**We currently support
27 students preparing
for gospel ministry
at Bible colleges
overseas.**



**827
churches
in Australia
are engaged
in cross-cultural
mission through CMS.**



**We partner with 13 student ministry
organisations around the world,
building future leaders for Christ.**



Growing GOD'S CHURCH

Churches are central to God's mission. Our Heavenly Father gathers his disciples into local churches so that we might grow and be strengthened in faith.

As God's people obey God's word, we are a visible witness—salt and light to a watching world. We are people who want to love one another, live godly lives, care for the poor, and serve one another sacrificially, as we look forward to the day when the Lord Jesus returns and all nations worship before him.

CMS seeks to work under local church leadership and serve those whom God is already gathering. We do not come with our own agendas or to build our own structures.

CMS works in partnership, and our desire is to equip Christians as leaders in the church and the world.

As well as sending missionaries, another way we seek to grow God's church is through our Co-Mission Partner program, supporting Christian leaders who are committed to evangelism, teaching or discipleship in their home country.



"With the prayer and financial partnership of CMS, I am training men and women for Bible teaching ministries at Johannesburg Bible College (JBC). One of our campuses is in Soweto, a township where sound Bible training is hard to access. Recently, women from all over the city heard faithful Bible teaching at our third JBC Women Serving Christ Conference. We thank and praise the Lord for CMS and their support for me, Kylie Zietsch (CMS missionary) and JBC."

Thulisile Mabe
Co-Mission Partner, South Africa



GOD'S *faithfulness* IN FRANCE

In the 1980s, a small group of students in Sydney began praying earnestly, laying the foundation for long-term gospel partnerships in France that continue to bear fruit.

The first CMS missionaries in France, Owen and Catherine Chadwick, who had been part of this prayer group, arrived in 1991. At the time, the evangelical church in France was growing, but there was a shortage of well-taught biblical leadership. In the student ministry, Groupes Bibliques Universitaires (GBU), the few staff lacked theological training, had limited understanding of the Bible, and a loose grasp of mission.

The impact of student ministry

Since the early 1990s, 21 individuals have served with CMS in France. Yohann Tourne, the General Secretary of GBU, says, "For over 30 years, CMS missionaries have helped grow the movement. They've helped clarify our mission and improved their approach to reading and studying the Bible. Generations of students have been trained, some have become staff members, and today, most of the team is French."

Karina Brabham, a current CMS missionary in France serving with the GBU, says "student ministry provides a wonderful opportunity for young people to engage with the Bible and be discipled. My prayer is for GBU students to live counter-cultural lives for Christ, wholeheartedly serving and honouring God, whether in France or beyond."

The impact of the GBU extends beyond student ministry, helping to prepare the next generation for leadership roles in churches. Another CMS missionary in France, Josh Apieczzonek, says, "There are several leaders in our church planting network who came up through the GBU ministry. One in particular, Samuel Mandras, was a Relais¹ trainee with (former CMS missionary) Paul King and is now serving as a pastor in a church and helping in church planting."

Great kingdom potential

Today, we celebrate the growth of leaders for the student movement and the church in France, but there remains a substantial need. Many French people are searching for answers to existential and spiritual questions. Opportunities abound to introduce Jesus to those seeking. As Yohann explains "Each year, there are over two million students at university in France, and we only bring 1000 of them together around the Bible. We have plenty of room to grow!"



You can pray with us for God's kingdom to grow in France and all over the world by signing up for CMS missionary prayer newsletters.



¹Relais is a ministry apprenticeship program like Ministry Training Strategy in Australia.
Image: The Relais team of tutors and trainees in front of the GBU office in France.



GOING *long-term*

CMS is committed to developing cultural understanding, learning language, and investing in long-term relationships for the sake of effective cross-cultural mission.

The risen Lord Jesus commissions the apostles to make disciples of all nations (Matthew 28:19). He sends them from Jerusalem to Judea to Samaria to the ends of the earth (Acts 1:8). He pours out his Holy Spirit, who empowers and equips them to proclaim the gospel across cultural and linguistic barriers (Acts 2:8-12).

CMS missionaries are committed to learning language and culture deeply, so that the good news of Jesus is clearly proclaimed.

But this doesn't happen quickly, so we are passionate about long-term mission.

Norm and Janelle Gorrie first went to Kenya with CMS in 1989. They served there for 16 of the last 35 years.

"Through our messy lives in North Kenya over many years, we tried to make Jesus known as God's son who gave his life for us and them. As we lived with our Kenyan brothers and sisters, we ate with them, we cried, laughed and danced together. We stood with them through bloody tribal clashes, droughts, famine, and violent elections.

By the grace of God, we won their trust and friendship in a part of the country that is dominated by Islam. The churches face many challenges both within and without. The whole region has struggled with tribal fighting and devastating drought that has seen many perish. Under God, and the CMS strategy of working with the local church for the long-term, we have seen gospel progress as we serve alongside Kenyans."

Norm and Janelle Gorrie
CMS missionaries, Kenya



"Long-term mission has helped me disciple people as they are and not by stereotype, or what I was told about them, or perceptions based on superficial relationships. Every year I'm here, teaching at Munguishi Bible College, I learn better how to help Tanzanians understand the Bible."

Mike Taylor
CMS missionary (with Katie), Tanzania

Our commitment to PASTORAL CARE

CMS is deeply committed to caring for those who cross cultures with the gospel.

Each year, CMS Australia senior staff visit every CMS missionary. Our Regional Mission Directors (RMDs) are in regular contact with our workers, providing practical and spiritual support and guidance—in ministry and everyday matters, as well as challenges and crises as they arise.

Maggie Crewes has served with CMS for over 30 years in six different locations:

“Over the years, I could have given up at some points of acute challenge or prolonged spiritual attack. But CMS has provided godly pastoral care, visits, support, connection, and the encouragement I needed to ride through every ‘storm’ I have faced. I am extremely grateful for our holistic view of participation in mission.”



Maggie Crewes
CMS missionary, Cambodia

“As a former CMS missionary, I deeply appreciate the pastoral care my family received. I know firsthand the value of pastoral visits, enabling CMS to understand the diverse contexts where people serve. In my role as an RMD, it is a privilege to help provide vital support to our workers in all the realities of cross-cultural mission.”



Rev Glen Turner
Regional Mission Director, CMS Australia



OUR *gospel partnership* IN THE NORTHERN TERRITORY

CMS has a long history of mission in many locations around the world. Under God, we have had a profound gospel impact in the Northern Territory for over a century.

I have a strong personal connection with that work, having served with CMS here from 1995 to 2006 and now as the Anglican Bishop.

Early days

In 1908, CMS missionaries and Aboriginal evangelists introduced the gospel to south-east Arnhem Land, establishing mission stations where Aboriginal people from different tribes and clans came together to live and work, and hear from the Bible.

These stations are now communities of between 500 and 1000 people, with churches led by local Aboriginal ministers. Church attendance in these remote communities is about the same per capita as in most parts of Australia, which means outside resourcing is helpful.

CMS partnership

In recent years CMS has provided church support workers for many of these places. They work under the direction of the local church leaders. CMS continues to provide teachers at Nungalinga College in Darwin, which has equipped Christian leaders for remote communities for 50 years. CMS missionaries also disciple and care for Aboriginal people from communities who are living in Darwin.

The support of CMS has helped strengthen Aboriginal churches in the Northern Territory.

My prayer is that God will raise up the next generation of church leaders and members who can share and show the news of God's saving work in Jesus. I hope to see many more people in the NT— young and old, men and women, urban and remote—brought into his family.



Rt Rev Greg Anderson
Bishop of the Northern Territory

"When we recently returned to visit Groote Eylandt after five years, we found the older clergy still ministering faithfully, and one of the few young men in the church reading his Bible daily, determined to grow in his faith despite his low literacy."

Terry and Liz McCoy
Former CMS missionaries,
Northern Territory



"CMS supports me in my teaching at Nungalinga College. Over the years CMS people like Ian and Jenny Wood, Josh Mackenzie, Derek and Rosemary Snibson, and (former missionaries) Tavis and Kate Beer have helped me with hands-on training. Teaching the Word of God at Nungalinga spreads to strengthen people from all the different places in the NT where students come from."



James Woods
Co-Mission Partner,
Northern Territory

THINKING ABOUT *mission*?

DO YOU LONG FOR A WORLD THAT KNOWS JESUS?

If you are thinking about cross-cultural mission, here are some steps you can take now:



Develop your
ministry gifts



Seek opportunities to
tell others about Jesus



Look for ways to be involved
in cross-cultural ministry



Develop your devotional life—make
time for prayer and Bible reading



Investigate CMS and
connect with missionaries



Subscribe to some
CMS missionary prayer letters



Once you have started with the steps above, take the
time to talk with staff at your local CMS branch about
how you could serve God. We'd love to hear from you!

Contact your local branch to start a conversation today.



During the application process to become a cross-cultural worker with CMS,
I was encouraged by the prayerfulness of all who were involved, whether it was
the initial informal conversations or the more formal interviews and meetings.
It was clear to me that all of us were seeking to know God's wisdom and leading.



Rowan

CMS missionary, South East Asia



We value **TRAINING**

At CMS, we believe missionaries should be well-trained, so that they are equipped to teach the Bible cross-culturally and serve long-term on location.

We expect our missionaries to complete formal study at a Bible college before they attend St Andrew's Hall in Melbourne.



Our aim at St Andrew's Hall is to enable missionaries to prepare carefully for their future ministry and location. We offer a 19-week residential course that runs twice a year, where we focus especially on missiology and cultural studies. It is our great joy to welcome each group, who arrive as 'new missionaries' and leave as dear friends in Christ.

David Williams

Director of Training and Development, CMS Australia

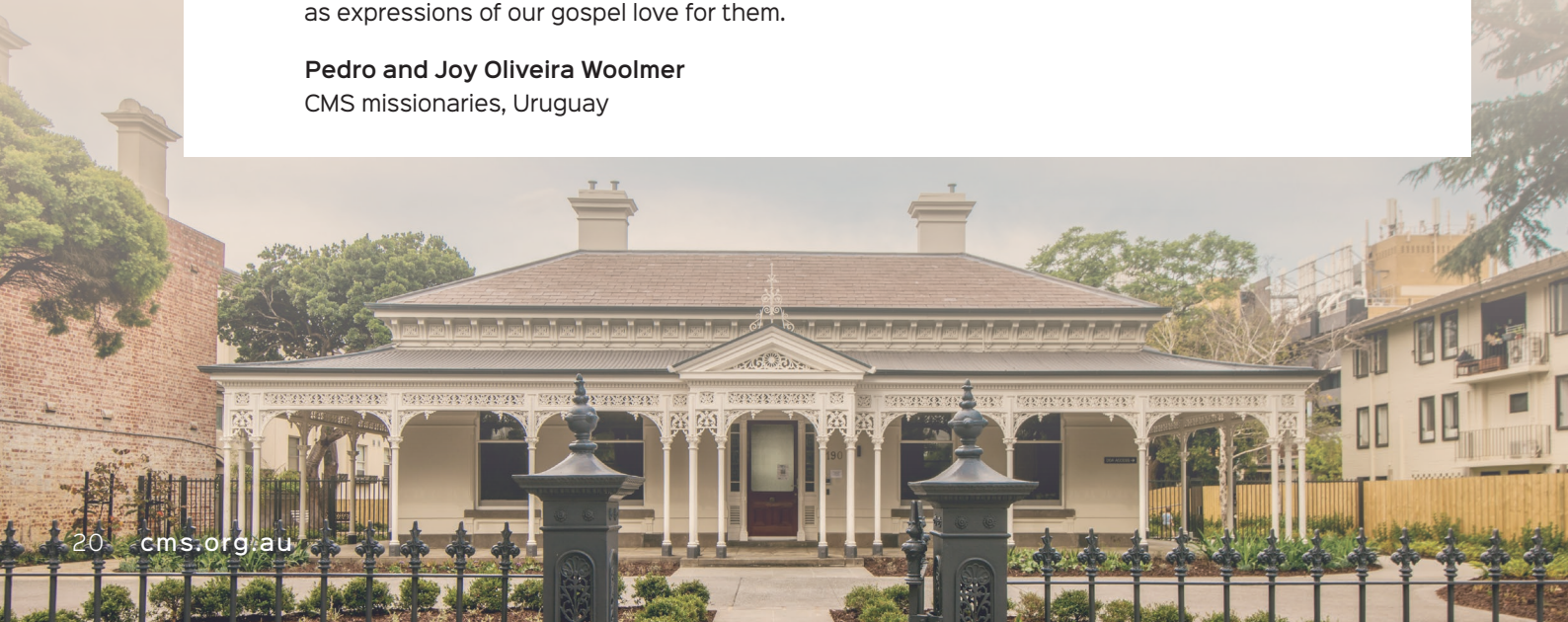
Why would missionaries arrive in a country and deliberately keep their mouths shut? Shouldn't they get on with preaching and teaching the gospel as soon as possible? It sounds crazy, but we have seen the value of vulnerable mission for long-term cross-cultural work.

Our training at St Andrew's Hall taught us about the power imbalance between foreign missionaries and locals, and how we can set aside our power. So, for the first couple of years particularly, we didn't suggest major changes, correct everyone's interpretation of the Bible, or use translators to teach straight away.

Four years later, we're seeing the fruit. People see that we're here to serve, and not to lord our training over them. They see our daily humiliation as we use their heart language, and not ours. And because they trust us, our teaching, training, and suggestions are received as we want them to be: as expressions of our gospel love for them.

Pedro and Joy Oliveira Woolmer

CMS missionaries, Uruguay





CMS has had a huge impact on my life. As a young woman I was a CMS Summer School junkie. I spent 20 years as a CMS missionary in Indonesia, at Nungalinya College working with Aboriginal Christians, and training missionary candidates at St Andrew's Hall with my husband Tony.

I still long for people to go to the gospel-poor. I want to see others learn as I did that despite their inadequacies, the Lord will use and teach them, particularly as they are supported by the CMS fellowship through prayer, and pastoral and material care.



Judith Nichols
CMS WA



Partner WITH US

CMS enables local churches to engage in world mission, as we partner with God's people around the world.

We take part in mission by praying earnestly for God's gospel blessings on his people; by raising up and setting apart gospel workers; and by learning from God's church around the world as together we serve the Lord Jesus.

We'd love for you and your church to share the joy of fellowship in cross-cultural mission together.

How can my church partner with CMS in cross-cultural mission?

- Start supporting a CMS missionary
- Pray for your missionary and for people to come to faith in Christ around the world
- Involve the whole church—all congregations and ages—in praying for missionaries
- Make the most of missionary visits
- Preach regularly on God's mission
- Bring church members to CMS events and pursue long-term or short-term mission opportunities.

And that's just the beginning.



Contact your local branch to learn about how your church can partner with CMS.

CMS branches get to be right in the mission mix, alongside missionaries and the churches and supporters that keep them on location. Resourcing Christians and their churches through ever-deepening mission partnerships, and then seeing the missionaries encouraged and emboldened, is an honour indeed!



Rev Mark Peterson
Executive Director,
CMS SANT



It has been a blessing to contribute my professional skills to God's mission as a Branch Council member over the years. I have learnt about missiology and governance and been richly fed by faithful Bible teaching at many Summer Schools. As CMS keeps growing healthily, we can set apart more workers, so that even more people will know Jesus.



Selena Yen
Council member,
CMS QNSW



One women's growth group has been praying for our family and the ministry of MOCLAM for 14 years! On a recent visit to Australia, it warmed my heart to see their faces. Their questions were an expression of genuine interest and generous care for God's work in Latin America.



Anita Lovell
CMS missionary (with Adrian),
Bolivia



Our church partners with five CMS missionaries. Some of our growth groups benefit hugely from adopting a mission partner, to keep in regular contact for prayer and support. When they visit, we are encouraged not only by hearing about God's work in their locations, but by their ministry of equipping us for God's mission here.



Neil Fitzpatrick
Senior Minister, Jannali
Anglican Church, NSW

We lead CMS Camp MMM for Year 11 and 12 students. As we challenge youth, we have been inspired to explore global missions for ourselves. We also participate in a monthly prayer group, praying for missionaries and encouraging each other in God's mission.



Ben and Bec Radloff
Camp Directors,
CMS NSW & ACT



**CMS relies on the
generosity of churches
and people like you.**

Give today at





We work with churches to set apart godly people as long-term cross-cultural workers. Our vision is for *a world that knows Jesus*.

CMS NSW & ACT

Level 5, 51 Druitt St SYDNEY NSW 2000
PO Box 21326 WORLD SQUARE NSW 2002
(02) 9267 3711 nswact@cms.org.au
cms.org.au/nswact

CMS QNSW

Level 1, 80 Petrie Terrace
PETRIE TERRACE QLD 4000
PO Box 220 RED HILL QLD 4059
(07) 3171 3020 qnsw@cms.org.au
cms.org.au/qnsw

CMS SANT

37 Angas Street ADELAIDE SA 5000
(08) 8212 4838 sa.nt@cms.org.au
cms.org.au/sant

CMS TAS

PO Box 501, SANDY BAY TAS 7006
0438 590 559 tas@cms.org.au
cms.org.au/tas

CMS VIC

Level 2, Building 2, 630 Mitcham Rd
MITCHAM VIC 3132
PO Box 2150 RANGEVIEW VIC 3132
(03) 9894 4722 vic@cms.org.au
cms.org.au/vic

CMS WA

31 Acheson Cr WOODVALE WA 6026
(08) 6209 9159 wa@cms.org.au
cms.org.au/wa

CMS Australia

Level 5, 51 Druitt St SYDNEY NSW 2000
PO Box 20095 WORLD SQUARE NSW 2002
(02) 9284 6777 cmsa@cms.org.au
cms.org.au

St Andrew's Hall

190 The Avenue PARKVILLE VIC 3052
(03) 9388 1663 sah@cms.org.au

cms.org.au

